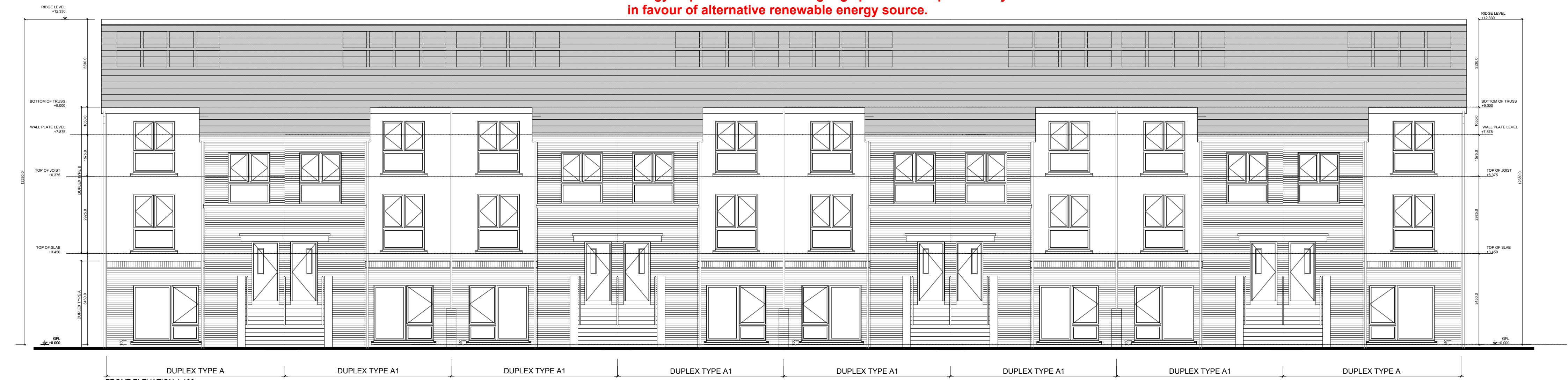




BLOCK A & B  
REAR ELEVATION  
SCALE: 1:100

Indicative Solar Panel or Photovoltaic panels indicated, Final Solar Panel Position to be confirmed.  
The solar panels shown are a provisional option to satisfy renewable energy requirements of building regs part L. Solar panels may be omitted in favour of alternative renewable energy source.



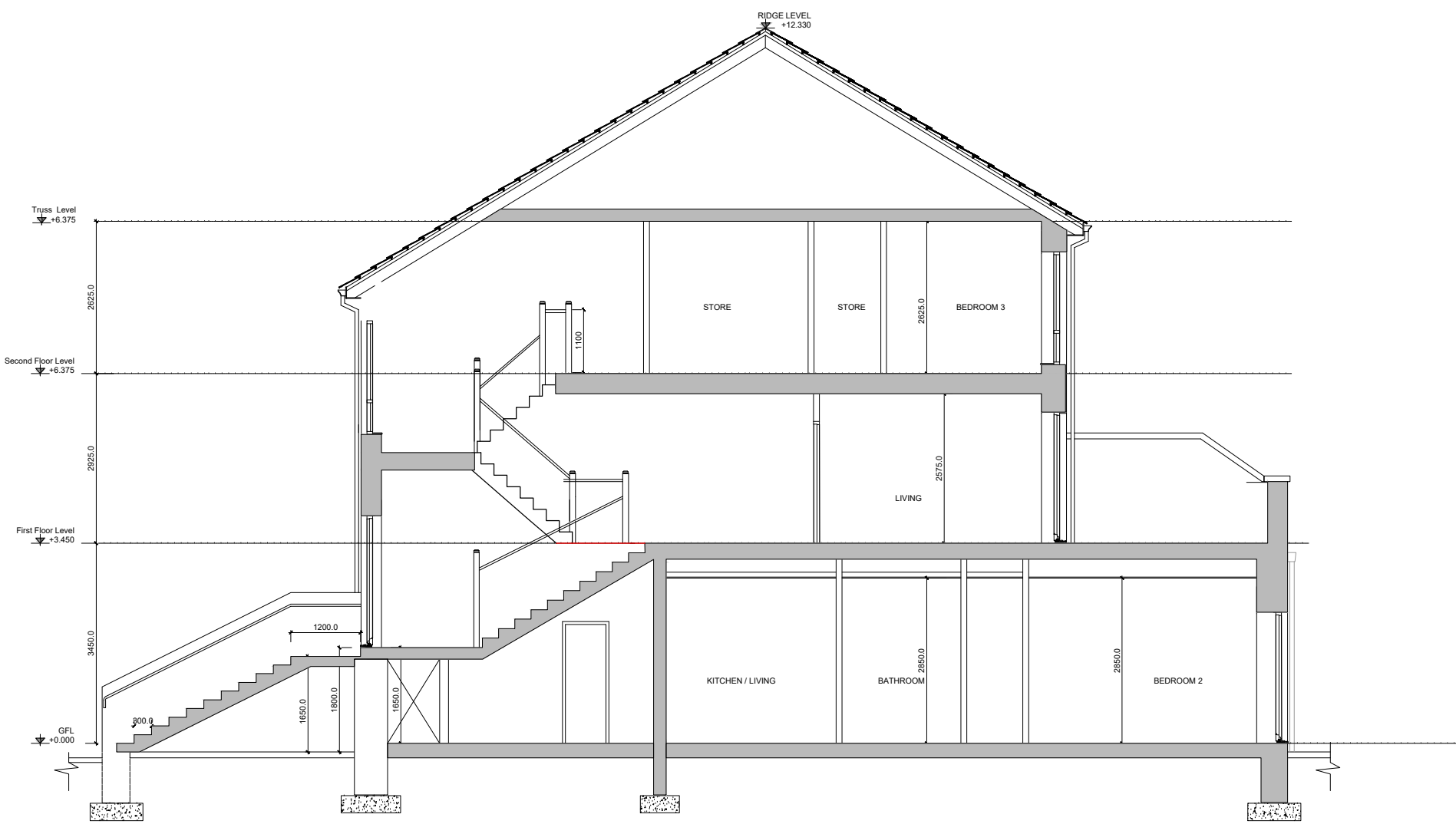
BLOCK A & B  
FRONT ELEVATION  
SCALE: 1:100



SIDE ELEVATION 1:100



SIDE ELEVATION 1:100



SECTION 1:100



KEYPLAN - NTS

LEGEND  
DUPLEX TYPE A  
DUPLEX TYPE A1

# GENERAL NOTES

THIS DRAWING TO BE READ IN CONJUNCTION WITH ARCHITECT'S DRAWINGS, CONSULTANT ENGINEER'S DRAWINGS AND SPECIFICATIONS & LANDSCAPE ARCHITECTS DRAWINGS

REFER TO ARCHITECT'S SITE PLAN FOR NORTH ORIENTATION.

LEVELS GIVEN ON HOUSE TYPE DRAWINGS ARE GIVEN TO A LOCAL ABSOLUTE ZERO LEVEL. FOR SPECIFIC LEVELS DEPENDING ON INDIVIDUAL UNIT LOCATION, REFER TO ARCHITECT'S CONTEXT SECTIONS AND ENGINEER'S DRAWINGS WHERE LEVELS ARE ALL GIVEN IN RELATION TO LAND SURVEYOR'S BENCHMARK BASED ON MALIN HEAD DATUM LEVEL.

## NOTES ON FINISHES:

ROOF : TO BE FINISHED IN SLATE OR CONCRETE ROOF TILES IN SELECTED COLOUR OR SIMILAR APPROVED.

WALLS : SELECTED CLAY BRICKWORK WHERE INDICATED OTHERWISE PAINTED SAND / CEMENT RENDER OR SELF COLOURED RENDER. EXPRESSED BANDS AROUND EXTERNAL OPES/ EXPRESSED LINTELS OVER EXTERNAL OPES WHERE INDICATED TO BE RECONSTITUTED STONE (LIGHT CREAM LIMESTONE OR GRANITE EFFECT)

JOINERY : ALL WINDOWS AND DOORS, FRAMES AND LEAVES, TO BE ALUMINIUM POWDER-COATED TO APPROVED COLOUR OR UPVC OR PAINTED TIMBER TO APPROVED COLOUR. OBSCURE GLAZING WHERE INDICATED TO SENSITIVE WINDOWS.


RAINWATER GOODS : GUTTERS, DOWNPIPES, AND FIXINGS TO BE uPVC OR ALUMINIUM POWDER COATED TO SELECTED COLOUR TO MATCH ROOF SLATES

SOLAR PANELS: INDICATIVE SOLAR PANEL POSITION, FINAL SOLAR PANEL POSITION DEPENDS ON HOUSE ORIENTATION. THE SOLAR PANELS SHOWN ARE A PROVISIONAL OPTION TO SATISFY RENEWABLE ENERGY REQUIREMENTS OF BUILDING REGS PART L. SOLAR PANELS MAY BE OMITTED IN FAVOUR OF ALTERNATIVE RENEWABLE ENERGY SOURCE.

NOTES:  
DO NOT SCALE FROM DRAWINGS. WORK TO FIGURED DIMENSIONS ONLY. ARCHITECT TO BE NOTIFIED OF ALL DISCREPANCIES.

SHD STAGE 3

REVISIONS		
DATE	DESCRIPTION	No.

 M CROSSAN O'ROURKE MANNING ARCHITECTS	PROJECT TITLE: COOLAGAD, GREYSTONES		DATE: MAR '22	DRAWN BY: GMCA
	DRAWING TITLE: Duplex Block A & B ELEVATIONS & SECTION		SCALE: 1:100 @ A1	REVISION:
	Darfmouth House, Grand Parade, Dublin 6, Ireland. Tel: 01-4062211 Fax: 01-4062277 E-Mail: arch@mccorm.com		JOB NO: 20005	DRAWING NO: PL302